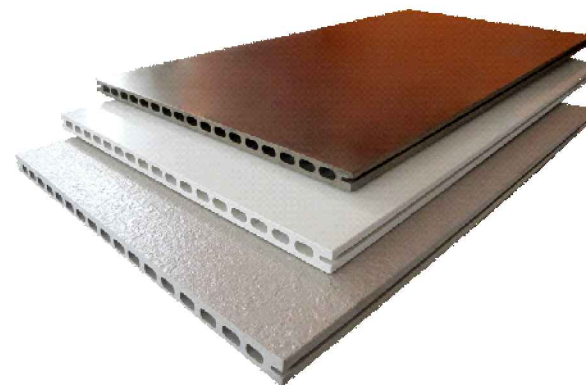


frontek  
cerámica tecnológica en fachadas



## WINDOW WALL INSTALLATION HORIZONTAL CONFIGURATION

---

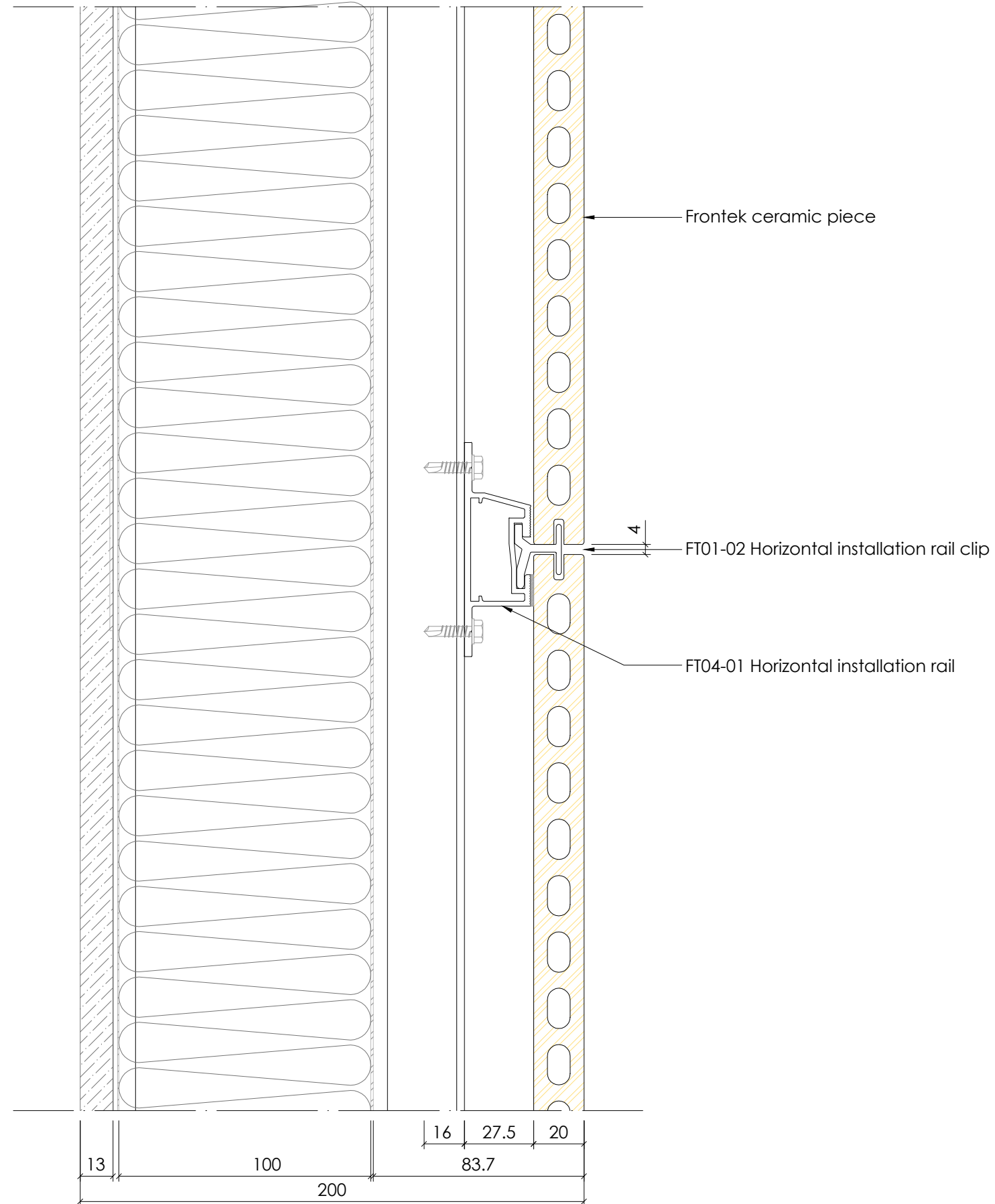
FRONTEK AUSTRALIA PTY LTD.

[www.frontek.com.au](http://www.frontek.com.au)

+61 2 9316 6818

# Horizontal Configuration

## WINDOW WALL INSTALLATION



VERTICAL SECTION.

FOR INFORMATION

### COPYRIGHT

These designs, details and/or specifications and the Copyright Therein, remain the property of **Frontek Australia.** and shall not be divulged in any form whatsoever without written permission of **Frontek Australia.**

All fixings sizes and types to be engineered by constructors

DRAWING DESCRIPTION  
VERTICAL SECTION

FACADE TYPE  
WINDOW WALL INSTALLATION

FRONTEK SYSTEM  
HORIZONTAL CONFIGURATION

DRAWN BY  
NURIA CASTRO

FIRST DRAWN DATE 14/05/2018

REVIEWED BY  
-

SCALE 1/20 SIZE A3

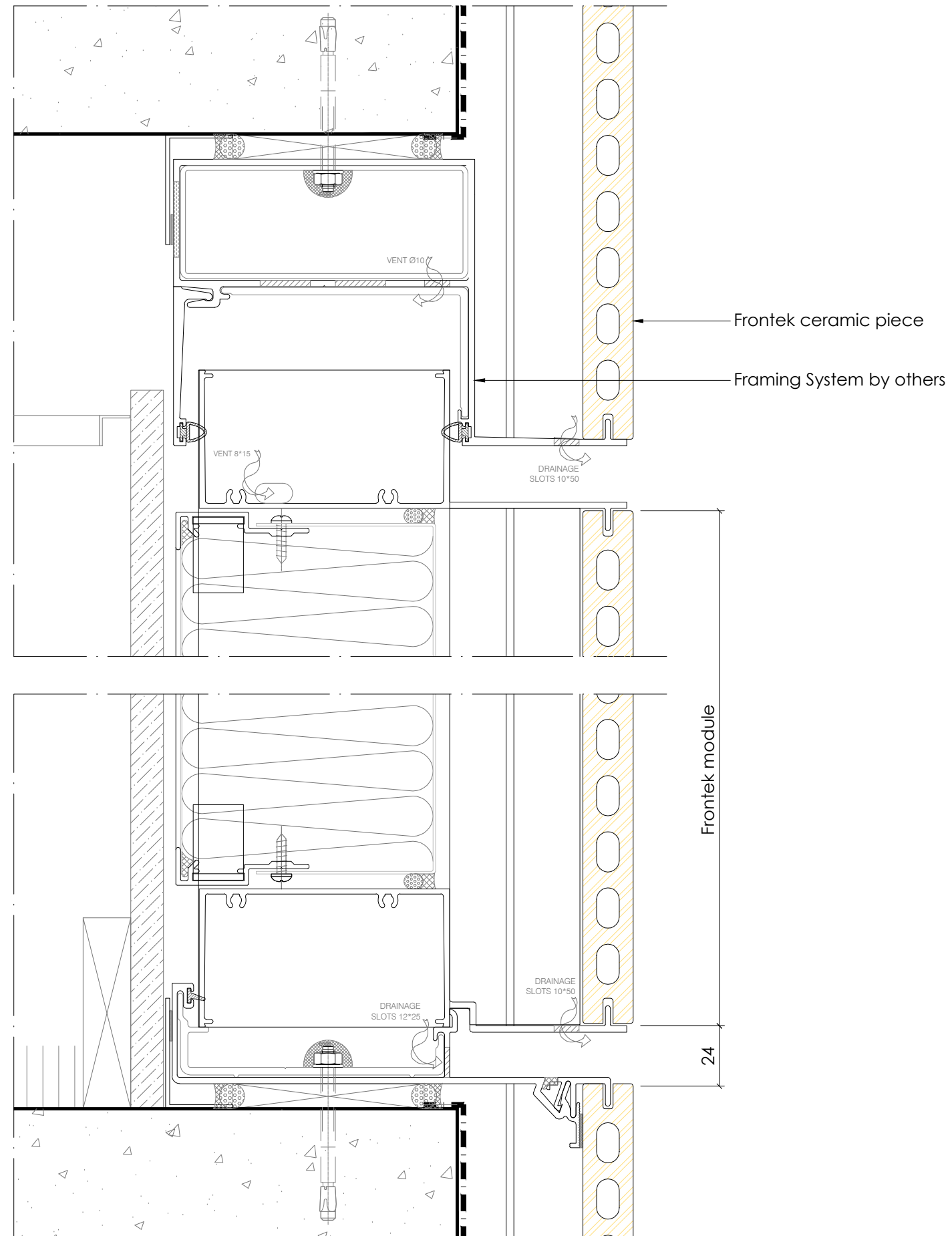
DRAWING NO. D001

**frontek**  
cerámica tecnológica en fachadas

FRONTEK AUSTRALIA PTY LTD.  
www.frontek.com.au  
+61 2 9316 6818

# Horizontal Configuration

## WINDOW WALL INSTALLATION



VERTICAL SECTION.

FOR INFORMATION

### COPYRIGHT

These designs, details and/or specifications and the Copyright Therein, remain the property of

**Frontek Australia.**

and shall not be divulged in any form whatsoever without written permission of

**Frontek Australia.**

All fixings sizes and types to be engineered by constructors

DRAWING DESCRIPTION  
VERTICAL SECTION

FACADE TYPE  
WINDOW WALL INSTALLATION

FRONTEK SYSTEM  
HORIZONTAL CONFIGURATION

DRAWN BY  
NURIA CASTRO

FIRST DRAWN DATE 14/05/2018

REVIEWED BY  
-

SCALE 1/20 SIZE A3

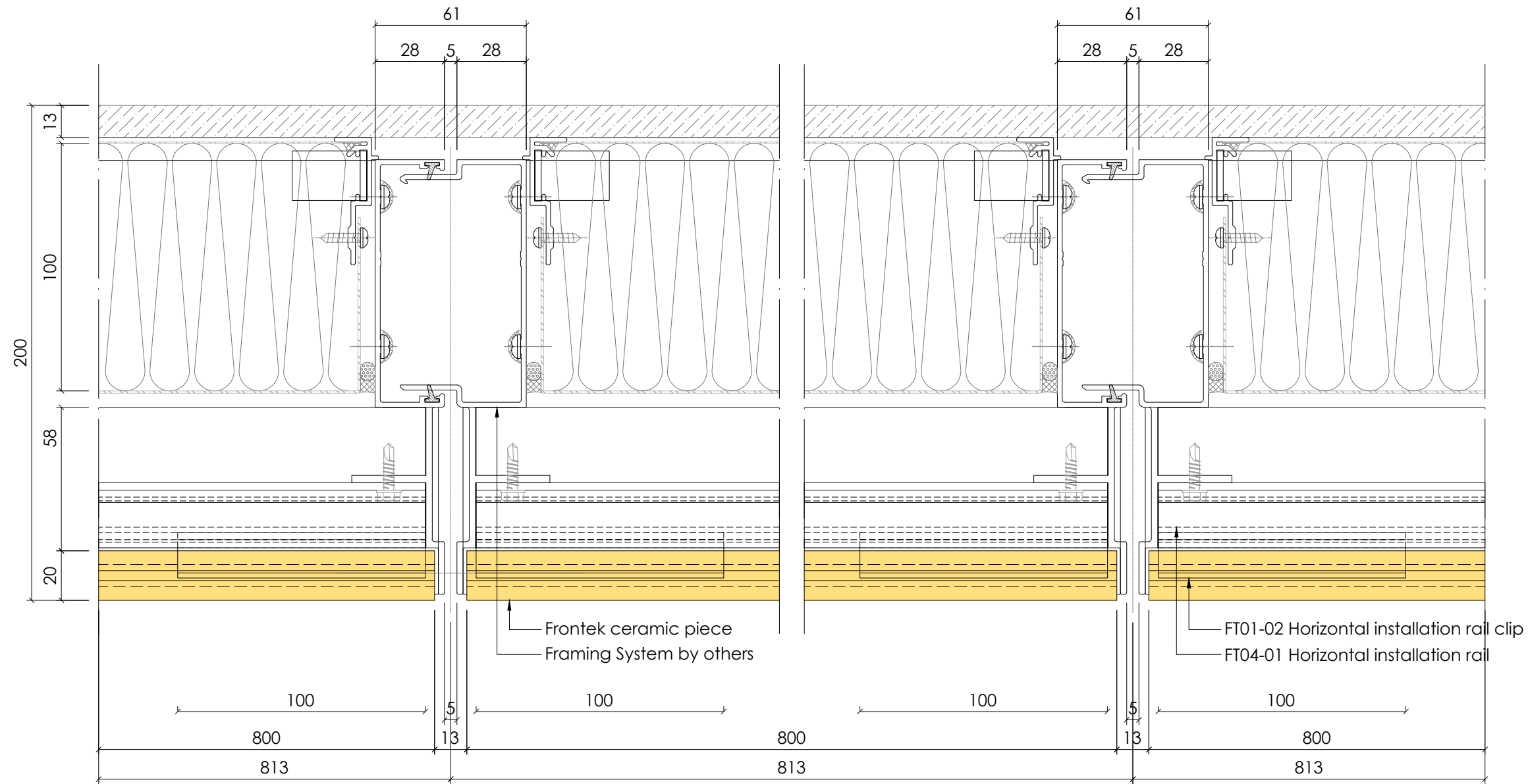
DRAWING NO. D002

**frontek**  
cerámica tecnológica en fachadas

FRONTEK AUSTRALIA PTY LTD.  
www.frontek.com.au  
+61 2 9316 6818

# Horizontal Configuration

## WINDOW WALL INSTALLATION



HORIZONTAL SECTION.

FOR INFORMATION

### COPYRIGHT

These designs, details and/or specifications and the Copyright Therein, remain the property of

**Frontek Australia.**

and shall not be divulged in any form whatsoever without written permission of

**Frontek Australia.**

All fixings sizes and types to be engineered by constructors

DRAWING DESCRIPTION  
HORIZONTAL SECTION

FACADE TYPE  
WINDOW WALL INSTALLATION

FRONTEK SYSTEM  
HORIZONTAL CONFIGURATION

DRAWN BY  
NURIA CASTRO

FIRST DRAWN DATE 14/05/2018

REVIEWED BY  
-

SCALE 1/20 SIZE A3

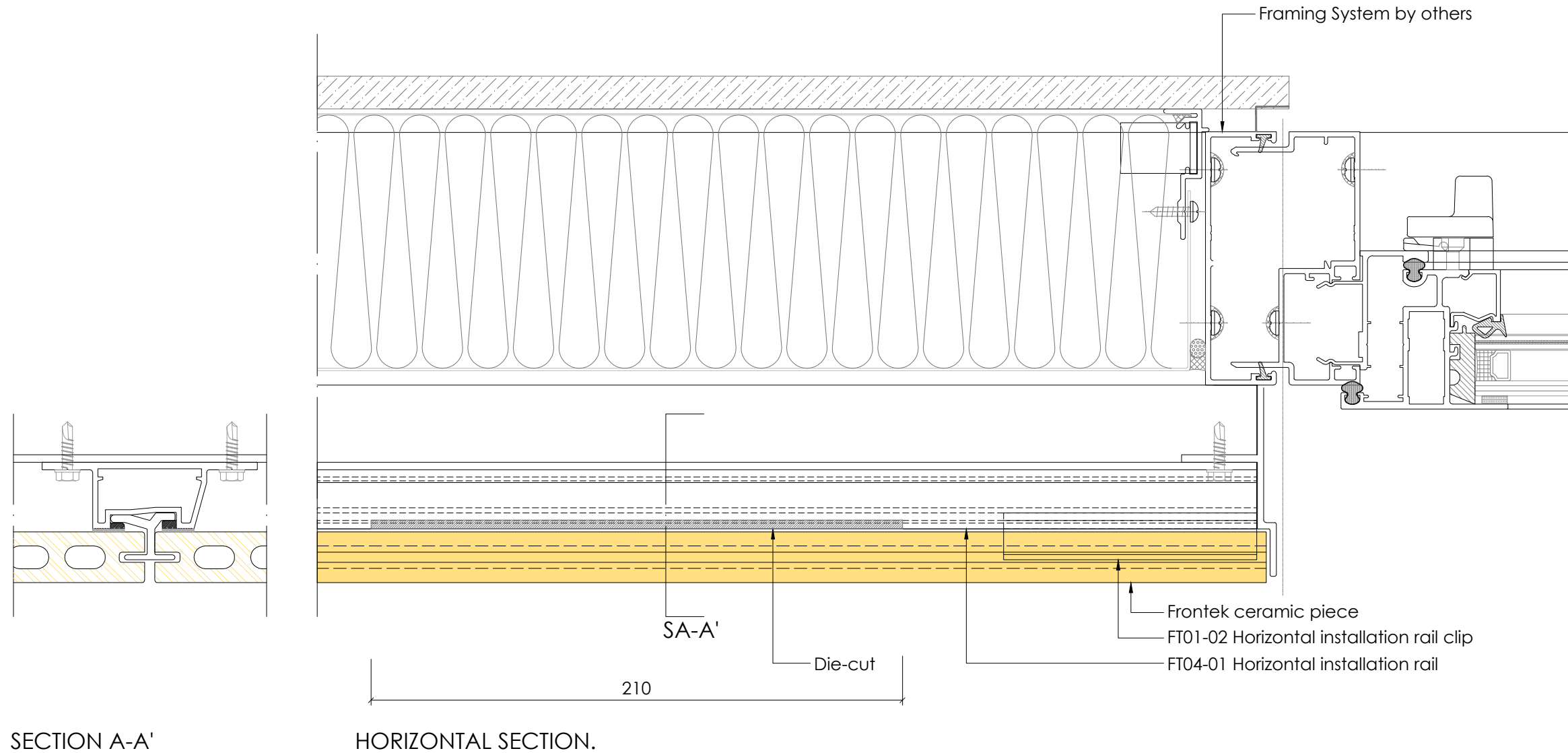
DRAWING NO. D003

**frontek**  
cerámica tecnológica en fachadas

FRONTEK AUSTRALIA PTY LTD.  
www.frontek.com.au  
+61 2 9316 6818

# Horizontal Configuration

## WINDOW WALL INSTALLATION



FOR INFORMATION

### COPYRIGHT

These designs, details and/or specifications and the Copyright Therein, remain the property of

**Frontek Australia.**

and shall not be divulged in any form whatsoever without written permission of

**Frontek Australia.**

All fixings sizes and types to be engineered by constructors

DRAWING DESCRIPTION  
HORIZONTAL SECTION

FACADE TYPE  
WINDOW WALL INSTALLATION

FRONTEK SYSTEM  
HORIZONTAL CONFIGURATION

DRAWN BY  
NURIA CASTRO

FIRST DRAWN DATE 14/05/2018

REVIEWED BY  
-

SCALE 1/20 SIZE A3

DRAWING NO. D004

**frontek**  
cerámica tecnológica en fachadas

FRONTEK AUSTRALIA PTY LTD.  
www.frontek.com.au  
+61 2 9316 6818